



# **Green Glue Noiseproofing Clips**

## **Installation Guide**





## INSTRUCTION AND SAFETY MANUAL

### GREEN GLUE NOISEPROOFING CLIPS

Green Glue Noiseproofing Clips are designed to isolate mid to high frequencies and are excellent at addressing impact noise. Testing has proven they are superior in performance to competitive clips. When used in conjunction with Green Glue Noiseproofing Compound, you can prevent more than 95 percent of sound from passing through a conventional wall.

#### NOISEPROOFING CLIPS SPECIFICATIONS



Width:	1 - 1/4 inch
Height:	4 - 1/4 inch
Depth:	1 inch
Weight:	0.25 lbs
Max Spacing:	48" on center
Recommended Load:	36 lbs ~3 drywall layers
Max Safe Load:	46 lbs ~4 drywall layers
Fail Load:	300 lbs ~27 drywall layers

#### SAFETY

Green Glue Noiseproofing Clips are straight forward to use but proper safety precautions should always be taken when using power tools such as power drills or screw guns.

#### INSTALLATION ACCESSORIES

##### Recommended Hat Channel:

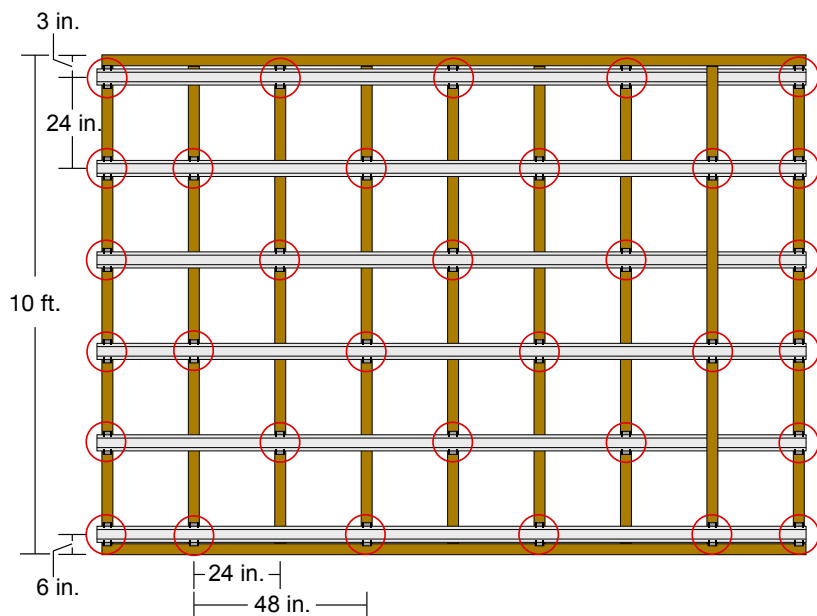
Size:	25 gauge hemmed edges
Depth:	7/8"
Width Top:	1 1/4"
Width Bottom:	2 1/2"

##### Recommended Screws by Stud Type:

Wood:	Use #8 x 2-1/2" coarse thread screws
Steel:	Use #8, 10 or 12 x 1-5/8" Type S self-tapping screws
Concrete:	Use 3/16" dia x 2-1/4" Tapcon or equal anchor Screw

# WALL INSTALLATION GUIDE

## INSTALLATION NOTES



If you're an architect or a home builder looking for an effective way to soundproof a room, look no further. Green Glue Noiseproofing Clips allow you to mechanically separate two sides of a wall so that when sound hits the wall, only one side vibrates. This keeps most of the sound from transmitting through to the other side.

- (1) Clips are spaced no further than 48 inches apart horizontally
- (2) Hat channel must not be spaced more than 24 inches vertically
- (3) Bottom clips must be less than 3 inches from the floor
- (4) Top clips must be less than 6 inches from the ceiling



Figure 3.1 Snap the channel into the clips

### STEP 1 - INSTALL THE CLIPS

Measure for placement of Green Glue Noiseproofing Clips using layout guidelines listed in the Installation Notes. Mark locations and install clips using appropriate screws. Outmost clips must be spaced at every interval.

### STEP 2 - INSTALL THE HAT CHANNEL

Snap appropriate hat channel into clips.

Most walls will require you to overlap hat channel. Instructions for doing so are as follows: Overlap 6 inches of hat channel between two clips. Secure the hat channel with two 7/16" framing screws. 18 gauge tie-wire can also be used.



Figure 3.2 Lift drywall into place. Affix drywall directly to the channel.

### STEP 3 - INSTALL THE DRYWALL

Place shims on the floor to allow spacing between the drywall and the flooring. This ensures decoupling from the floor to make it impossible for vibrations to travel from wall to floor and vice-verse.

Screw drywall in place through hat channel. Be sure drywall is fully installed before removing shims from underneath.

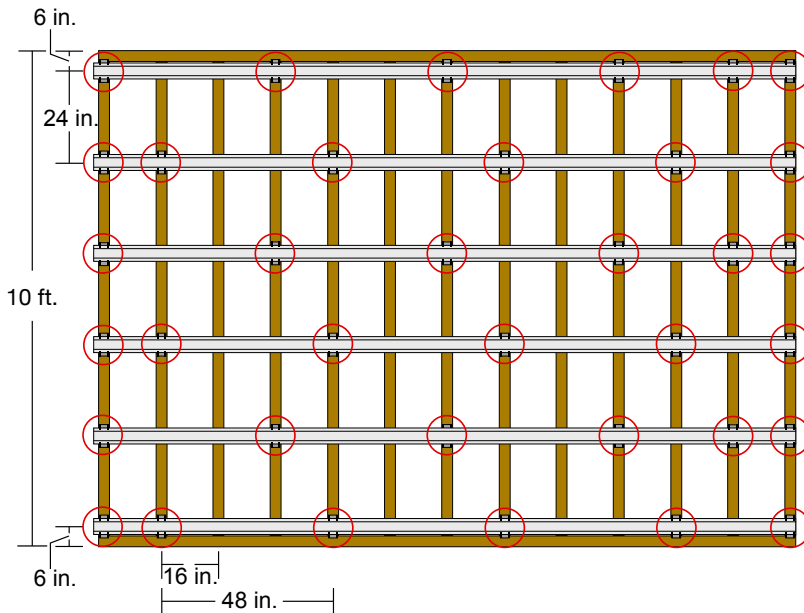
### STEP 4 - SEAL THE PERIMETER

Use acoustical sealant to fill the gaps around the perimeter, and all gaps around electrical boxes, windows, and doors.



# CEILING INSTALLATION GUIDE

## INSTALLATION NOTES



Using Green Glue Noiseproofing Clips to mechanically separate a ceiling from the floor above it is a more complete sound proofing solution than solely approaching the problem from above the floor. Green Glue Noiseproofing clips isolate the ceiling from building structure so that sound does not propagate from structure to ceiling and vice versa.

- (1) Clips are spaced no further than 48 inches apart along the length of the channel.
- (2) Hat channel must not be spaced more than 24 inches apart.
- (3) Clips along the perimeter must be less than 3 inches from the end joists.

## STEP 1 - INSTALL THE CLIPS

Measure for placement of Green Glue Noiseproofing Clips using layout guidelines listed in the Installation Notes above. Mark locations and install clips using appropriate screws to fasten the clips to the floor joists. Outermost clips must be spaced at every interval.

## STEP 2 - INSTALL THE HAT CHANNEL

Snap 20 gauge hat channel into clips.

Many ceilings will require you to overlap hat channel. Instructions for doing so are as follows: Overlap 6 inches of hat channel between two clips. Secure the hat channel with two 7/16" framing screws. 18 gauge tie-wire can also be used.

## STEP 3 - INSTALL THE DRYWALL

Have one person lift and hold the drywall in place. Have a second installer screw the drywall directly into the hat channel using a power drill.

Leave a 1/4" gap around the perimeter of the ceiling. This ensures decoupling from the wall to make it impossible for vibrations to travel from wall to floor and vice-verse.

## STEP 4 - SEAL THE PERIMETER

Use acoustical sealant to fill the gaps around the perimeter of the ceiling, and around any lighting fixtures and vents.



Figure 4.1 Install clips to ceiling joists by applying screws the fastening holes in the clips.



Figure 4.2 Snap the furring channel into the clips by sliding one edge into the clip and then firmly pressing on the second edge of the channel until it snaps into place.



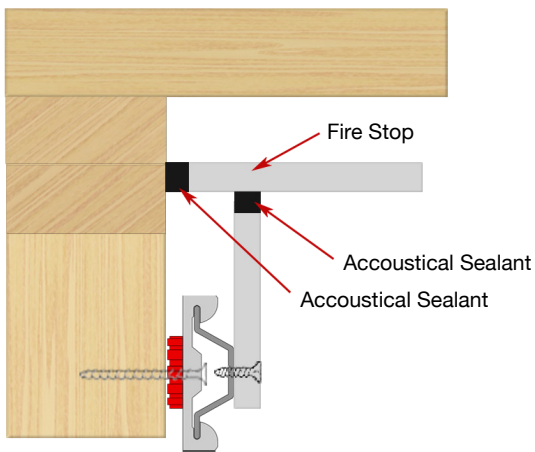
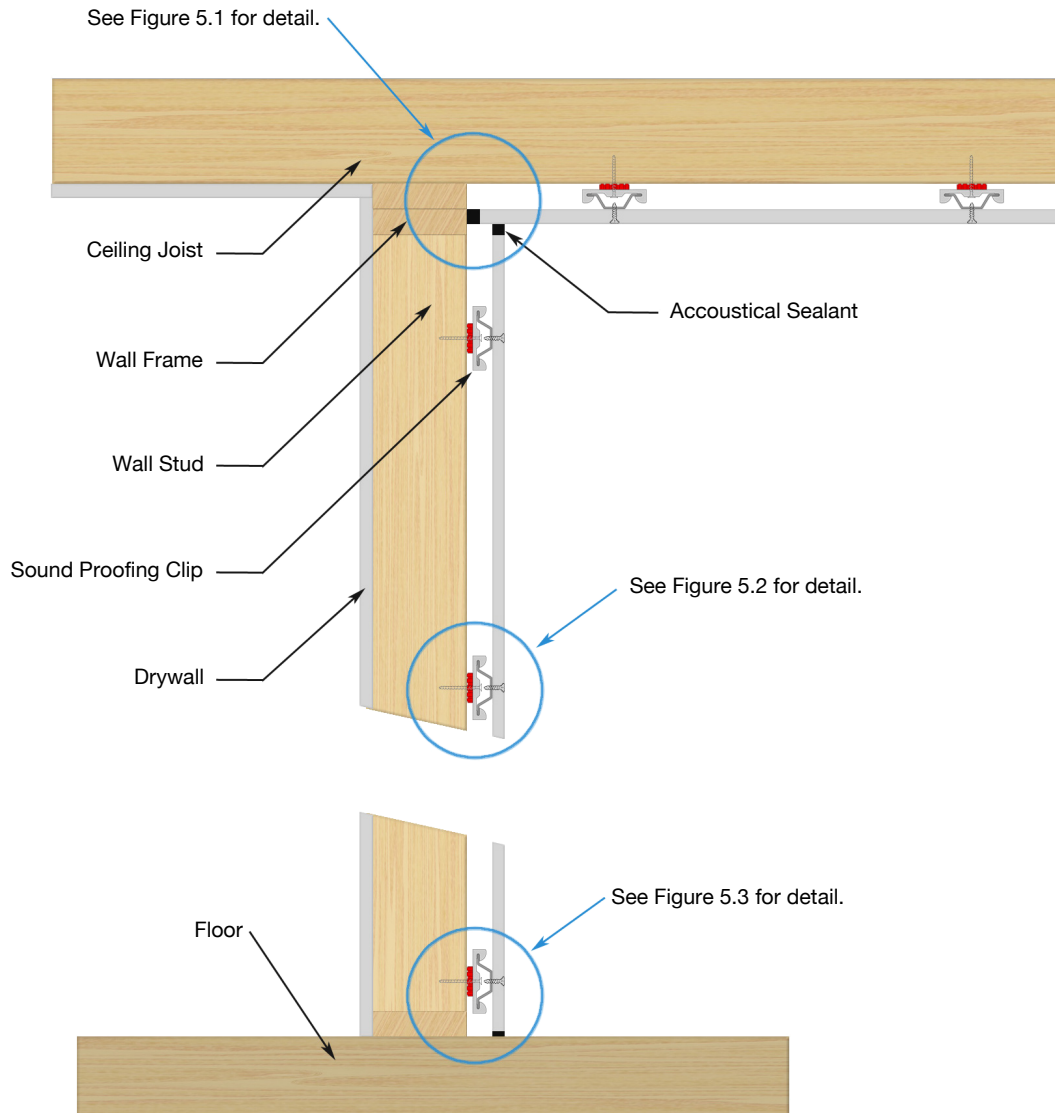


Figure 6.1: Create fire stops between rooms according to local building codes.

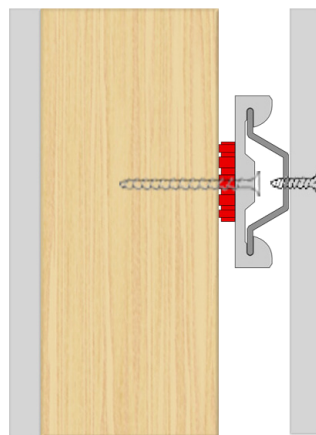


Figure 6.2: Install clips to the building frame and install the drywall directly to the channel. Drywall screws should not be in line with the clip screws.

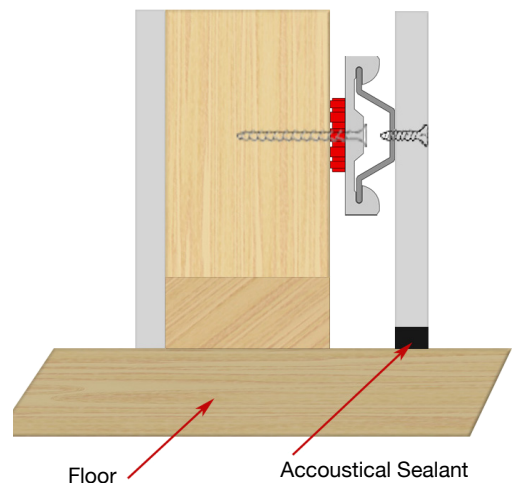


Figure 6.3: 1/4" gap must be left between drywall and any building structure to be filled with acoustical sealant.





# CLIPS NEEDED BY WALL & CEILING SIZE

## (7/8" HAT CHANNEL, 24" O.C.)

Length	Width / Height									
	1'-4'	5'-8'	9'-12'	13'-16'	17'-20'	21'-24'	25'-28'	29'-32'	33'-36'	37'-40'
1'-3'	4	6	8	10	12	14	16	18	20	22
3'-5'	6	9	12	15	18	21	24	27	30	33
5'-7'	8	12	16	20	24	28	32	36	40	44
7'-9'	10	15	20	25	30	35	40	45	50	55
9'-11'	12	18	24	30	36	42	48	54	60	66
11'-13'	14	21	28	35	42	49	56	63	70	77
13'-15'	16	24	32	40	48	56	64	72	80	88
15'-17'	18	27	36	45	54	63	72	81	90	99
17'-19'	20	30	40	50	60	70	80	90	100	110
19'-21'	22	33	44	55	66	77	88	99	110	121
21'-23'	24	36	48	60	72	84	96	108	120	132
23'-25'	26	39	52	65	78	91	104	117	130	143
25'-27'	28	42	56	70	84	98	112	126	140	154
27'-29'	30	45	60	75	90	105	120	135	150	165
29'-31'	32	48	64	80	96	112	128	144	160	176
31'-33'	34	51	68	85	102	119	136	153	170	187
33'-35'	36	54	72	90	108	126	144	162	180	198
35'-37'	38	57	76	95	114	133	152	171	190	209
37'-39'	40	60	80	100	120	140	160	180	200	220
39'-41'	42	63	84	105	126	147	168	189	210	231

## (7/8" HAT CHANNEL, 16" O.C.)

Length	Width / Height									
	1' - 4'	5' - 8'	9' - 12'	13' - 16'	17' - 20'	21' - 24'	25' - 28'	29' - 32'	33' - 36'	37' - 40'
1' - 2' 4"	4	6	8	10	12	14	16	18	20	22
2' 4' - 4'	8	12	16	20	24	28	32	36	40	44
4' - 5' 4"	10	15	20	25	30	35	40	45	50	55
5' 4" - 6' 7"	12	18	24	30	36	42	48	54	60	66
6' 7" - 8'	14	21	28	35	42	49	56	63	70	77
8' - 9' 4"	16	24	32	40	48	56	64	72	80	88
9' 4" - 10' 7"	18	27	36	45	54	63	72	81	90	99
10' 7" - 12"	20	30	40	50	60	70	80	90	100	110
12' - 13' 4"	22	33	44	55	66	77	88	99	110	121
13' 4" - 14' 7"	24	36	48	60	72	84	96	108	120	132
14' 7" - 16'	26	39	52	65	78	91	104	117	130	143
16' - 17' 4"	28	42	56	70	84	98	112	126	140	154
17' 4" - 18' 7"	30	45	60	75	90	105	120	135	150	165
18' 7" - 20'	32	48	64	80	96	112	128	144	160	176
20' - 21' 4"	34	51	68	85	102	119	136	153	170	187
21' 4" - 22' 7"	36	54	72	90	108	126	144	162	180	198
22' 7" - 24'	38	57	76	95	114	133	152	171	190	209
24' - 25' 4"	40	60	80	100	120	140	160	180	200	220
25' 4" - 26' 7"	42	63	84	105	126	147	168	189	210	231
26' 7" - 28"	44	66	88	110	132	154	176	198	220	242
28' - 29' 4"	46	69	92	115	138	161	184	207	230	253
29' 4" - 30' 7"	48	72	96	120	144	168	192	216	240	264
30' 7" - 32'	50	75	100	125	150	175	200	225	250	275
32' - 33' 4"	52	78	104	130	156	182	208	234	260	286
33' 4" - 34' 7"	54	81	108	135	162	189	216	243	270	297
34' 7" - 36'	56	84	112	140	168	196	224	252	280	308
36' - 37' 4"	58	87	116	145	174	203	232	261	290	319
37' 4" - 40'	60	90	120	150	180	210	240	270	300	330

